

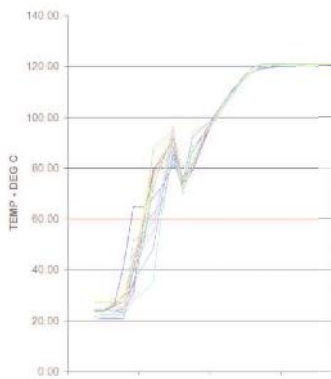
- Channel Skip
- Unit of Measurement
- Channel Tagging
- High Resolution
- High Accuracy
- Validation Reports
- 21 CFR part 11
- MODBUS
- USB

```

1: 0.00004 DEG C
4: 53.29 % RH
5: 127.50 MS/MIN
7: 646.32 KG/CM2

```

Data Scanned by g-tek...  
...tells you everything



ISO 9001:2000

Series SC5x / 9x scanner / data logger

The series SC5x / 9x of data logger is all new and revised scanner / data loggers. They incorporate the state of the art 4x20 characters backlit LCD display with white over blue characters to make it visible from the distance.

It is a high speed data acquisition system with high resolution and accuracy.

This dataloggers along with AqWire series of Software makes a complete solution for 21CFR Part 11 compliance. User defined Password protected menus does not allow any unauthorised changes either from PC or from key-board. Every changes are reported either online or in offline mode.

It has a built-in nonvolatile memory of upto 2MB.

The online printing and storing is possible from 5 seconds up to 18 hours.

These series has an added feature of high and low alarm per channel with an up to eight alarm groups. It has a facility to assign any alarm to any group.

It has an option of communication like RS232C, RS485 or USB. It also supports MODBUS ASCII protocol.

Fully Configurable with Accuracy Options...

...Accuracy SC 5x series



Input Range	Input Signal Type
-100 to +600 °C	RTD (PT-100)
0 to 400 °C	TC-J
0 to 1200 °C	TC-K
0 to 1700 °C	TC-R
0 to 1700 °C	TC-S
-100 to +400 °C	TC-T
-3000 to +3000	4-20 mA
-3000 to +3000	0-20 mA
-3000 to +3000	0-1 V
± 0.5 % FSD ± 1 digit	Accuracy
> 120 dB; 50/60 Hz	Common mode Noise Rejection

Resolution	Linearization	Data Scan Rate	C/E Error	Display	No. of Channels	Channel skip	PC Interface (optional)	Printer Port (optional)	Programming	Password Protection	Memory (Optional)	Alarm Setting	Alarm Relay Group	Relay Contact
0.1	Polynomial based software linearization	1 channel / Sec	± 0.9 °C for 0-50 °C	4x20 Character LCD backlit display white over blue	8/16/24	Yes	RS232C / RS485/USB	Centronics	Using 4 keys	Optional	64K/512K/1024K/2048K	High / Low max 2 per channel	Up to 8	1A, 230V resistive;

...High Accuracy SC 9x series



Input Range	Input Signal Type
-200 to +850 °C	RTD (PT-100)
0 to 750 °C	TC-J
0 to 1350 °C	TC-K
0 to 1700 °C	TC-R
0 to 1700 °C	TC-S
-200 to +400 °C	TC-T
-3000 to +3000	4-20 mA
-3000 to +3000	0-20 mA
-3000 to +3000	0-1 V
Refer to table-1	Accuracy
0.01	Resolution
> 120 dB; 50/60 Hz	Common mode Noise Rejection

Resolution	Linearization	Data Scan Rate	C/E Error	Display	No. of Channels	Channel skip	PC Interface (optional)	Printer Port (optional)	Programming	Password Protection	Memory (Optional)	Alarm Setting	Alarm Relay Group	Relay Contact
0.01	Polynomial based software linearization	12 Channels / 5 Sec	± 0.5 °C for 0-50 °C	4x20 Character LCD backlit display white over blue	8/16/24	Yes	RS232C / RS485 / USB	Centronics	Using 4 keys	Optional	64K/512K/1024K/2048K	High / Low max 2 per channel	Up to 8	1A, 230V resistive;

Table-1

Sensor	Range	Accuracy	Temp. Drift @ 25°C
PT100	0-1000 °C	±0.05% FSD	±0.005% / °C
TC-J	0-750 °C	±0.05% FSD	±0.005% / °C
TC-K	0-1350 °C	±0.05% FSD	±0.005% / °C
TC-R	0-1700 °C	±0.05% FSD	±0.005% / °C
TC-S	0-1700 °C	±0.05% FSD	±0.005% / °C
TC-T	-200 to +400 °C	±0.05% FSD	±0.005% / °C
4-20 mA	0-20 mA	±0.05% FSD	±0.005% / °C
0-1 V	0-1 V	±0.05% FSD	±0.005% / °C
0-5 V	0-5 V	±0.05% FSD	±0.005% / °C
0-10 V	0-10 V	±0.05% FSD	±0.005% / °C
0-20 mA	0-20 mA	±0.05% FSD	±0.005% / °C
0-1 V	0-1 V	±0.05% FSD	±0.005% / °C
0-5 V	0-5 V	±0.05% FSD	±0.005% / °C
0-10 V	0-10 V	±0.05% FSD	±0.005% / °C
0-20 mA	0-20 mA	±0.05% FSD	±0.005% / °C

ASSURED QUALITY

- Accurate
- Reliable
- User-friendly

ON-TIME DELIVERY

- Anytime
- Any Place
- Committed

SURE SUPPORT

- All the time
- Anywhere
- Ever ready

Easy selection... ...Lasting performance

S	X	Y	R	SW	M	S
S = Series	X = Channel	Y = PC Interface	R = Relay	SW = Software	M = Memory	S = Sensor Type
5	8 Ch	0	0	0	0	0
5x series	1	None	None	Aq-4.0 Secure	Memory	Uni.
9	16 Ch	1	1	1	No Memory	1
9x series	2	RS-232	8	2	None	RTD
	3	RS-485	8	2		2
		USB				4-20mA
						3
						0-20mA
						4
						0-Volt
						5
						TC-J
						6
						TC-K
						7
						TC-R
						8
						TC-S
						9
						TC-T
						A
						0-10V DC
						B
						0-5V DC



Over a period of 20 years, G-tek has established its name in the Indian process recording market, trusted by OEMs and end users alike for a spectrum of applications. Customer and quality driven, G-tek strives to extend and improve its products, adding value through an array of options and features.

# AqWire Software Specifications - An Overview

	Version AqWire 4.0	Version AqWire 4.0 (Secure 21 CFR Compliant)
<b>Online</b>		
Connect To Device	√	√
View Current Data	√	√
Start Batch	√	√
Edit Channel Parameters	√	√
Acknowledge Alarm	X	√
View Online Batch & Graph	√	√
Download	√	√
Clear Device	√	√
<b>Offline</b>		
View Offline Batch	√	√
Insert Stage in Offline Batch	X	√
Modify Offline Batch Data Value	X	√
Filter Offline Batch Date	√	√
Graph	√	√
Mass Storage (USB Pendrive)	√	√
CSV Report	√	√
PDF Report & HTML Report	√	√
Data Report	√	√
Alarm Report	√	√
Average Report	√	√
Average Summary Report	X	√
F0-Fd / FH Report	X	√
Hold Time Report	X	√
Insert Header Footer in report	√	√
<b>Audit trail</b>		
Login	X	√
User Management	X	√
View Audittrial	X	√
Change Password	X	√
<b>Database</b>		
Backup	√	√
Restore	√	√

Dealer / Representative

---

Manufacturers of :

- Circular Chart Recorders
- Strip Chart Recorders
- Hygro-Thermographs
- Inkless Recorders
- Scanners & Data Loggers
- Application Specific Controllers



**G-TEK CORPORATION**  
 3, mahavir estate, karelibaug  
 vadodara-390 018  
 tel.: +91-265-2461912  
 fax: +91-265-2460127  
 e-mail: info@gtek-india.com  
 url: www.gtek-india.com

The specifications given above are an overview, and may be or may not be available in all product variants, or at an additional cost. The company reserves the right to change the specifications without prior notice, as the company follows a continual improvement philosophy for its products.